



SONOSYS® Megasonic System with Slim Line Generator for Dual Nozzle
1 MHz + 2 MHz / 1 MHz + 3 MHz
2 MHz + 3 MHz / 2 MHz + 4 MHz

Function

The transducer in the Megasonic Dual Nozzle generates a Megasonic wave, which is transmitted through a flowing liquid (e.g. DI-water) to the surface of the substrate. The Megasonic energy each with app. 35 Watt is concentrated on a small point of 2 x 4 mm. This Megasonic Nozzle system provides advanced non contact cleaning processes.

Application

Cleaning of Single Wafers, Masks, LCD's, Substrates and Micro Electro Mechanical Systems (MEMS).

Technical data modular Megasonic Generator

Electrical data

| | |
|---------------------------------|---|
| Output power: | 70 Watt assembled with MLM 1 & MLM 2 MLM = Megasonic Low Power Module |
| Output power adjustment: | App. 20 % - 100 % |
| Frequency: | 950 kHz bis 1,05 MHz / 1,95 MHz bis 2,05 MHz 2,95 MHz bis 3,05 MHz / 3,95 MHz bis 4,05 MHz |
| Mains Voltage: | 230 VAC; 50 – 60 Hz |

Mechanical data

| | |
|--------------------|-------------------------------|
| Housing: | 19" enclosure 3/4 U |
| Dimensions: | 28 HP; 165x185x329 mm (WxHxD) |
| Weight: | App. 5,2 kg |

Operational conditions

| | |
|-----------------------------|--|
| Ambient temperature: | + 10°C to + 40 °C |
| Humidity: | Condensed moisture is to be prevented! |

Order data Megasonic Generator 120 Watt

| Artikel Nummer | Mains voltage | Frequency |
|----------------|---------------|---------------|
| 13405-100 | 230 VAC | 1 MHz + 2 MHz |
| 13407-070 | 230 VAC | 1 MHz + 3 MHz |
| 13407-071 | 230 VAC | 2 MHz + 3 MHz |
| 13406-002 | 230 VAC | 2 MHz + 4 MHz |

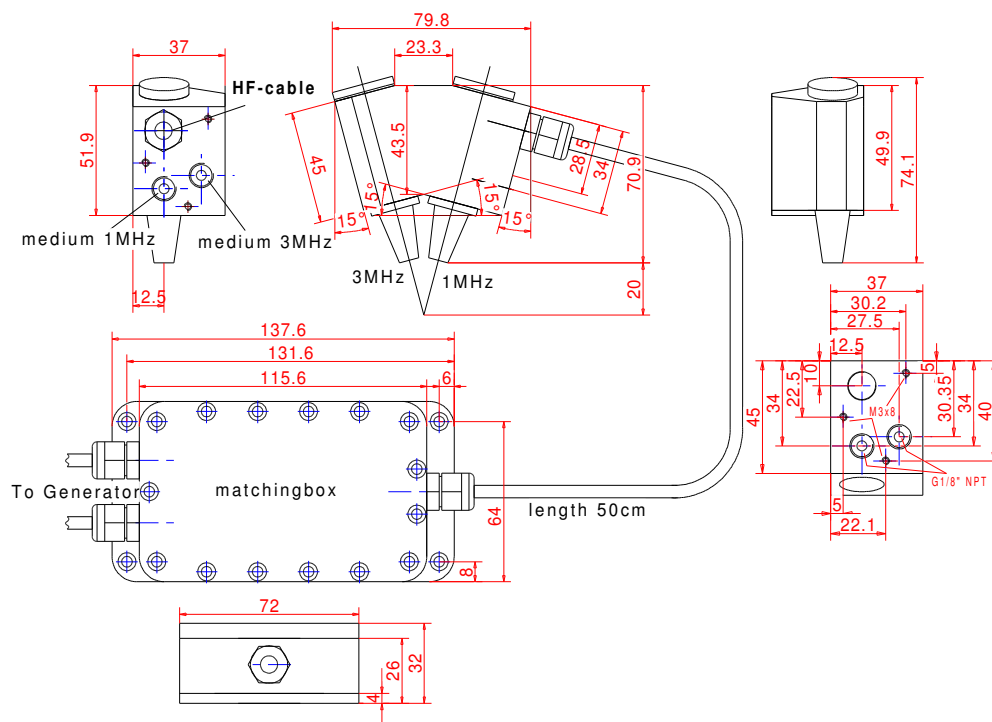
Technical data Megasonic Dual Nozzle

Electrical data

| | |
|---|--|
| High Frequency Input: | 2 x 35 Watt / 1 MHz / 2 MHz / 3 MHz / 4 MHz |
| Transducer Element: | Special PZT-Piezoceramic |
| HF-Cable: | Screened; Length: 3 m; Ø 4,5mm; Material: PTFE |
| Cable length between nozzle and matchingbox: | Standard 20 cm; Maximum 50 cm |

Mechanical data

| | |
|---|-------------------------|
| Outer dimension: | 74 x 79,8 x 37 mm |
| Weight: | App.:600 g |
| Supply for Liquid Medium: | 2 x 1/8" NPT |
| Amount of Liquid Medium Flow: | Min. 2 x 1,0 l / minute |
| Liquid Temperature: | App. 20 °C – 60 °C |
| Distance between the nozzle output and the object to be cleaned: | 5 mm to 20 mm |



Order data Megasonic Dual Nozzle

| Order Number | Material | Effective diameter | Frequency |
|--------------|-------------------------|--------------------|---------------|
| 13790-023 | PTFE / Quartz glass tip | 4,0 mm | 1 MHz + 2 MHz |
| 13790-025 | PTFE / Quartz glass tip | 4,0 mm | 1 MHz + 3 MHz |
| 13792-004 | PTFE / Quartz glass tip | 4,0 mm | 2 MHz + 3 MHz |
| 13792-005 | PTFE / Quartz glass tip | 4,0 mm | 2 MHz + 4 MHz |

Order data Liquid Flow Sensor

| Order Number | Material | Type | Supply |
|--------------|----------|------------------|----------|
| 63949-200 | PTFE | LPH-375-3-T-SPST | 1/4" NPT |