

**Gearbox S.J. 100.02**

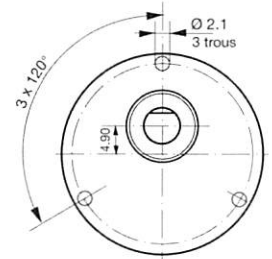
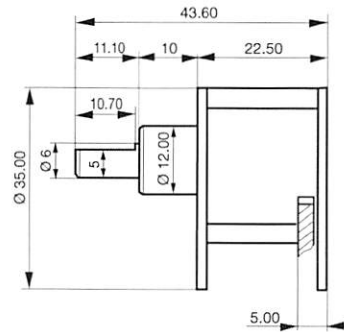
*Without backlash*

- Motor pinion N° 100.02.038, page 13

**Engranaje de reducción**

**S.J. 100.02 Sin juego angular**

- Piñón del motor N° 100.02.038, pagina 13

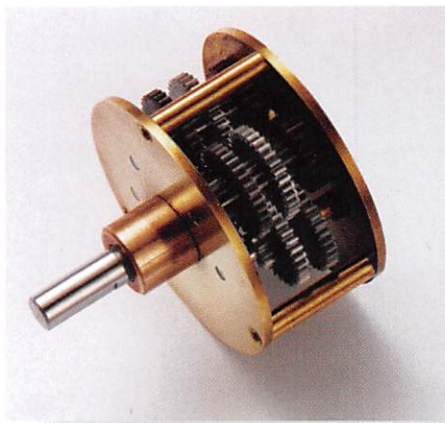


Charge axiale, Axial load, Achsiallast : 15 N max.

Backlash: 0° Juego angular : 0°

Dimensions in mm / Medida en mm

Order N° N° de pedido	Maximum torque Par de torsión max.	Ratio Transmisión	Sense of rotation Dirección de rotac.
S J 100. 02. 200	0.2 Nm	200 :1	≠
S J 100. 02. 360	0.2 Nm	360 :1	=
S J 100. 02. 540	0.2 Nm	540 :1	=



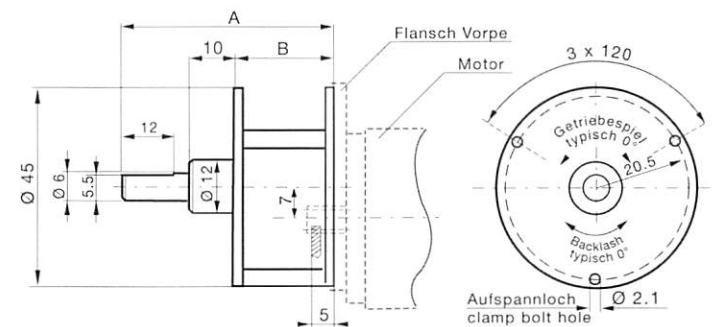
**Gearbox GWS-6230 SJ**

*Without backlash*

**Engranaje de reducción**

**GWS-6230 SJ**

*Sin juego angular*



Charge axiale, Axial load, Achsiallast : 30 N max.

Jeu angulaire, Angular backlash, Getriebespiel : 0° Juego angular : 0°

Dimensions in mm / Medida en mm

Order N° N° de pedido	Maximum torque Par de torsión max.	Ratio Transmisión	A	B	Sense of rotation Dirección de rotac.
GWS 5	0.1	5.85 :1	37.5	12.5	=
GWS 9	0.1	9.69 :1	37.5	12.5	=
GWS 17	0.2	17.55 :1	40.0	15.0	≠
GWS 29	0.2	29.07 :1	40.0	15.0	≠
GWS 59	0.3	59.67 :1	42.5	17.5	=
GWS 98	0.6	98.85 :1	42.5	17.5	=
GWS 202	0.6	202.88 :1	45.0	20.0	≠
GWS 501	0.6	501.17 :1	47.5	22.5	=
GWS 889	0.6 Nm	889.62 :1	47.5	22.5	=